

THE ECONOMY AT A GLANCE

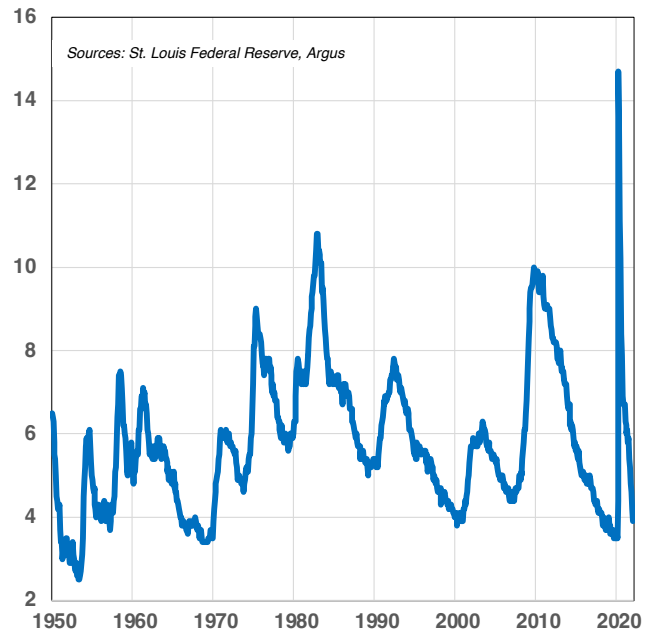
ECONOMIC HIGHLIGHTS

February 14, 2022
 Vol. 89, No. 25

JOBS GROWTH STRENGTHENS IN JANUARY

The U.S. economy added 467,000 payroll jobs in January, well above the consensus expectation of 150,000. Turning to other data points, the unemployment rate rose one-tenth of a percent to 4.0%, and the number of unemployed persons rose to 6.5 million from 6.3 million in December — this as more people re-entered the work force. Average hourly earnings rose \$0.23 from the prior month and 5.7% from the prior year. Revisions for the two previous months added back a whopping 709,000 jobs, though we note that the adjustments also reflect the Labor Department’s annual benchmarking process. In January, employment gains occurred in leisure and hospitality, professional and business services, retail trade, transportation and warehousing, construction, and manufacturing. The report (and especially the revisions) explains some of the inconsistencies in the December report that we highlighted last month and indicates that the economy remains on a growth track -- even with the impact of the Omicron variant. The robust jobs numbers and high wage growth further strengthen the case for Fed rate hikes beginning in March.

U.S. UNEMPLOYMENT RATE (%)

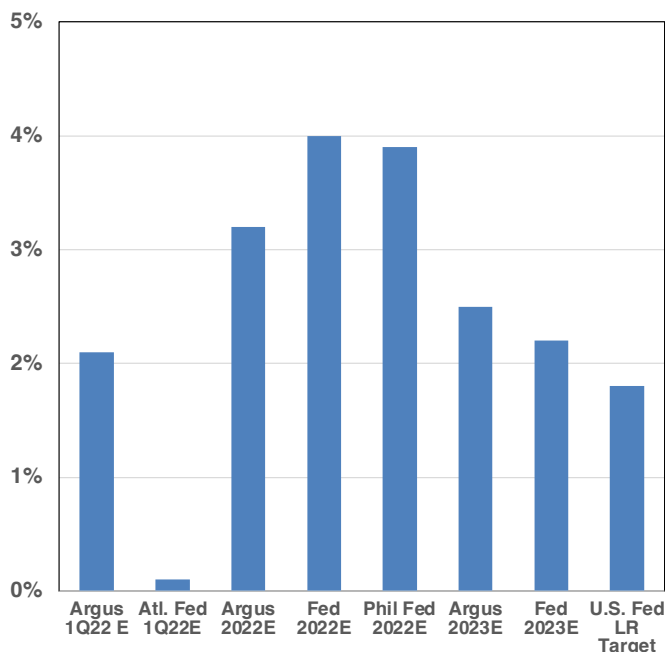


ECONOMIC HIGHLIGHTS (CONTINUED)

WE LOOK FOR 2.1% GROWTH IN 1Q GDP

Recent data indicates that U.S. GDP is still expanding, though not consistently across all segments of the economy. COVID-19 is likely to affect GDP for several more quarters, at least. We expect resiliency from the economy, however, and don't anticipate a recession in the near term. The primary driver of GDP over the next few quarters is likely to be the course of the pandemic. Trends here have been positive of late, as new Omicron cases appear to have passed their peak. The domestic employment environment is in better shape than it was a year ago, although consumer confidence trends are mixed. Auto sales have recovered from their pandemic lows, but growth has slowed due to supply-chain issues (that are beginning to be resolved). Businesses are again expanding. But the housing market has started to cool as home prices soar. Our model calls for a 2.1% increase in 1Q22 GDP. We look for stronger growth as 2022 progresses and Omicron fears fade. On an annual basis, our forecast for 2022 GDP growth is 3.4%. Our estimates are a bit lower than those of other forecasters. The Federal Reserve and the IMF project 2022 growth of 4.0%. The Philadelphia Federal Reserve's Survey of Professional Forecasters calls for growth of 3.9%. That said, the GDPNow Forecast from the Federal Reserve Bank of Atlanta is only 0.1% for 1Q22.

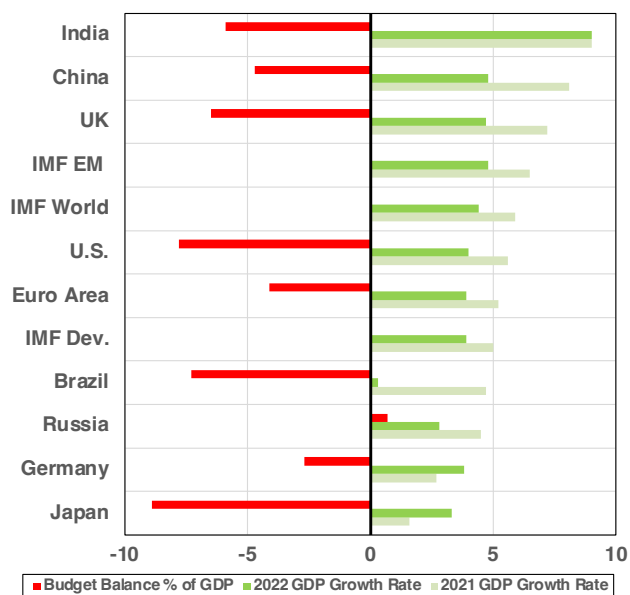
GDP ESTIMATES



GLOBAL GROWTH FORECAST DIALED DOWN

Expectations for robust global economic growth in 2022 have been revised lower, this in the wake of ongoing supply-chain disruptions, earlier-than-expected monetary policy changes, and cutbacks in aggressive fiscal spending by governments around the world. Late in 2021, the International Monetary Fund projected global growth of 4.9% in 2022, down from 5.9% in 2021. In its latest update, the IMF projected 4.4% growth, with industrialized economies expanding 3.9% and emerging economies 4.8%. The IMF expects U.S. GDP to grow 4%, while European GDP expands 3.9%, and Japan's economy increases at a 3.3% rate. The outlook for China has been cut as well; the forecast for the world's second-largest economy is now 4.8%. India is among the few nations for which forecasts remain intact (at 9.0% growth). In terms of asset allocation, we recommend that investors over-weight portfolios toward U.S.-based securities. Global stocks generally offer value, but outlooks are less certain.

GLOBAL GDP GROWTH RATES & FORECASTS (%)

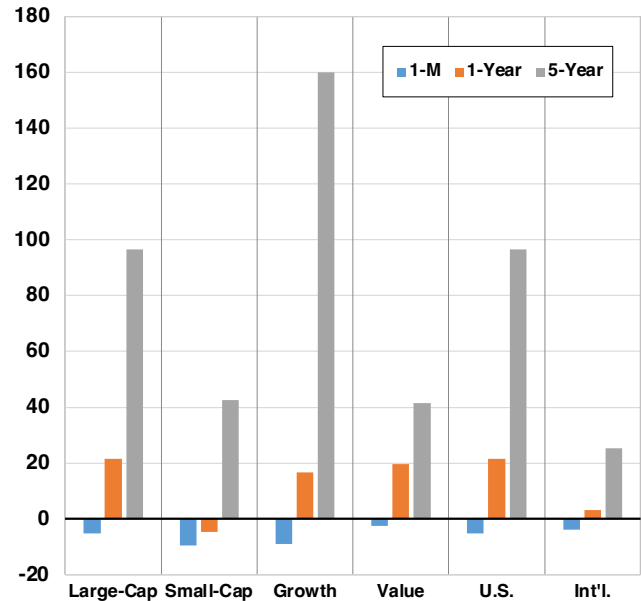


FINANCIAL MARKET HIGHLIGHTS

ARGUS'S FAVORED CLASSES, SEGMENTS

Stocks got off to a slow start in 2022, as rising interest rates compressed valuations. Bond prices also slumped on inflation concerns. Looking ahead, our Stock-Bond Barometer model is close to equally balanced between stocks and bonds for long-term investors. In other words, these asset classes should be near their normal weights in diversified portfolios. We have looked for large-cap companies with strong balance sheets and experienced managements to be the leaders during the recovery from COVID-19. This has played well, and now, with vaccines being distributed, small-cap risks are reduced and values are attractive. Our recommended exposure to small- and mid-caps is now 15% of equity allocation, in line with the benchmark weighting. U.S. stocks have outperformed global stocks over the trailing one- and five-year periods. We expect this to continue over the long term given volatile global economic and currency conditions. That said, international stocks offer favorable near-term valuations, and we target 5%-10% of equity exposure to the group. Value stocks took an early lead in 2021, but growth stocks ultimately outperformed. We anticipate that growth, led by Tech and Healthcare, will once again outperform value in 2022, led by Energy and Materials, as long as interest rates remain low.

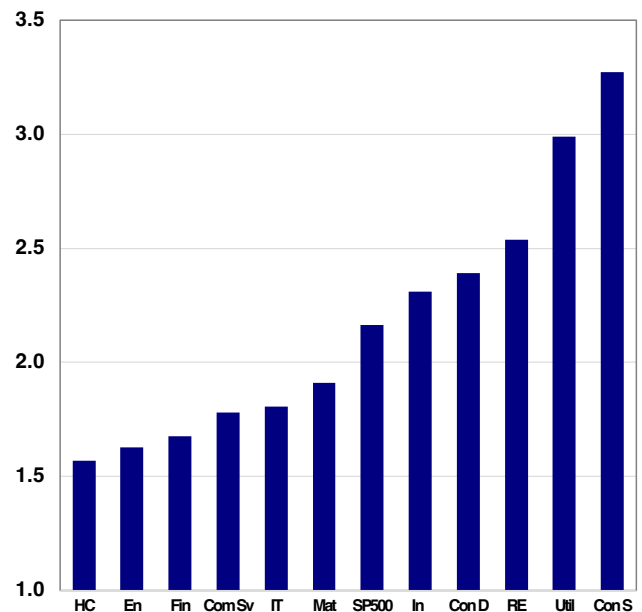
**MARKET SEGMENT RETURNS 2022
(% THROUGH 1/31/22)**



VALUES IN HEALTHCARE, FINANCIAL, TECH

Investors hunting for stocks that reasonably balance long-term growth prospects and current value characteristics might want to look at companies in the Financial Services, Information Technology, and Healthcare sectors. These are among the groups that are selling for (price/earnings)/(growth+yield) ratios at or below the S&P 500's ratio of 2.2. To generate PEGY ratios, we use the P/E ratio for each sector (based on forward earnings) for the numerator. For the denominator, we average the growth rates for the past five years along with two years of forward estimates (to achieve a smoother, less volatile, earnings trend), and then add the current yield (to approximate total return). Premium-valued sectors with low growth rates include Consumer Staples and Utilities. Our Over-Weight sectors include Healthcare, Financial Services, Industrial, Materials and Information Technology. Our Under-Weight sectors include Consumer Staples and Utilities.

SECTOR PEGY RATIOS



ECONOMIC CALENDAR

Previous Week's Releases

| Date | Release | Month | Previous Report | Argus Estimate | Street Estimate | Actual |
|--------|-----------------------------|----------|-----------------|----------------|-----------------|--------|
| 15-Feb | PPI Final Demand | January | 0.2% | 0.3% | 0.5% | NA |
| | PPI ex-Food & Energy | January | 0.5% | 0.4% | 0.4% | NA |
| 16-Feb | Retail Sales | January | -1.9% | 1.5% | 1.7% | NA |
| | Retail Sales; ex-autos | January | -2.3% | 1.0% | 0.7% | NA |
| | Business Inventories | December | 1.3% | 1.6% | 1.5% | NA |
| | Import Price Index | January | -0.2% | 0.5% | 1.3% | NA |
| | Industrial Production | January | -0.1% | 0.5% | 0.4% | NA |
| | Capacity Utilization | January | 76.5% | 76.5% | 76.8% | NA |
| 17-Feb | Housing Starts | January | 1702 K | 1675 K | 1672 K | NA |
| 18-Feb | Leading Economic Indicators | January | 0.8% | 0.5% | 0.3% | NA |
| | Existing Home Sales | January | 6.18 Mil. | 6.00 Mil. | 6.04 Mil. | NA |

Next Week's Releases

| Date | Release | Month | Previous Report | Argus Estimate | Street Estimate | Actual |
|--------|-------------------------|----------|-----------------|----------------|-----------------|--------|
| 28-Feb | Wholesale Inventories | January | 2.2% | NA | NA | NA |
| 1-Mar | ISM Manufacturing | February | 57.6 | NA | NA | NA |
| | Construction Spending | January | 0.2% | NA | NA | NA |
| 3-Mar | ISM Non-Manufacturing | February | 59.9 | NA | NA | NA |
| | Factory Orders | January | -0.4% | NA | NA | NA |
| | Non-farm Productivity | 4Q | 6.6% | NA | NA | NA |
| | Unit Labor Costs | 4Q | 0.3% | NA | NA | NA |
| 4-Mar | Non-farm Payrolls | February | 467 K | NA | NA | NA |
| | Average Weekly Hours | February | 34.5 | NA | NA | NA |
| | Average Hourly Earnings | February | 0.7% | NA | NA | NA |
| | Unemployment Rate | February | 4.0% | NA | NA | NA |

Argus Research Co. (ARC) is an independent investment research provider whose parent company, Argus Investors' Counsel, Inc. (AIC), is registered with the U.S. Securities and Exchange Commission. Argus Investors' Counsel is a subsidiary of The Argus Research Group, Inc. Neither The Argus Research Group nor any affiliate is a member of the FINRA or the SIPC. Argus Research is not a registered broker dealer and does not have investment banking operations. The Argus trademark, service mark and logo are the intellectual property of The Argus Research Group, Inc. The information contained in this research report is produced and copyrighted by Argus Research Co., and any unauthorized use, duplication, redistribution or disclosure is prohibited by law and can result in prosecution. The content of this report may be derived from Argus research reports, notes, or analyses. The opinions and information contained herein have been obtained or derived from sources believed to be reliable, but Argus makes no representation as to their timeliness, accuracy or completeness or for their fitness for any particular purpose. In addition, this content is not prepared subject to Canadian disclosure requirements. This report is not an offer to sell or a solicitation of an offer to buy any security. The information and material presented in this report are for general information only and do not specifically address individual investment objectives, financial situations or the particular needs of any specific person who may receive this report. Investing in any security or investment strategies discussed may not be suitable for you and it is recommended that you consult an independent investment advisor. Nothing in this report constitutes individual investment, legal or tax advice. Argus may issue or may have issued other reports that are inconsistent with or may reach different conclusions than those represented in this report, and all opinions are reflective of judgments made on the original date of publication. Argus is under no obligation to ensure that other reports are brought to the attention of any recipient of this report. Argus shall accept no liability for any loss arising from the use of this report, nor shall Argus treat all recipients of this report as customers simply by virtue of their receipt of this material. Investments involve risk and an investor may incur either profits or losses. Past performance should not be taken as an indication or guarantee of future performance. Argus has provided independent research since 1934. Argus officers, employees, agents and/or affiliates may have positions in stocks discussed in this report. No Argus officers, employees, agents and/or affiliates may serve as officers or directors of covered companies, or may own more than one percent of a covered company's stock. Argus Investors' Counsel (AIC), a portfolio management business based in Stamford, Connecticut, is a customer of Argus Research Co. (ARC), based in New York. Argus Investors' Counsel pays Argus Research Co. for research used in the management of the AIC core equity strategy and model portfolio and UIT products, and has the same access to Argus Research Co. reports as other customers. However, clients and prospective clients should note that Argus Investors' Counsel and Argus Research Co., as units of The Argus Research Group, have certain employees in common, including those with both research and portfolio management responsibilities, and that Argus Research Co. employees participate in the management and marketing of the AIC core equity strategy and UIT and model portfolio products.

